

# 2017 Profile of Older Floridians

Sumter



Population by Age Category		
All Ages	125,102	100.0%
Under 18	10,925	8.7%
Under 60	49,145	39.3%
18-59	38,220	30.6%
60+	75,957	60.7%
65+	65,123	52.1%
70+	47,451	37.9%
75+	28,264	22.6%
80+	13,746	11.0%
85+	4,978	4.0%

Source: Office of Economic and Demographic Research, 2016

Population by Race and Ethnicity		
White	73,899	97.3%
Black	1,587	2.1%
Other Minorities	471	0.6%
Total Hispanic	1,265	1.7%
White	1,153	1.5%
Non-White	112	0.1%
Total Non-Hispanic	74,692	98.3%
Total Racial and Hispanic Minorities <sup>2</sup>	3,211	4.2%

Source: EDR, 2016

Population by Gender		
Male	34,073	44.9%
Female	41,884	55.1%

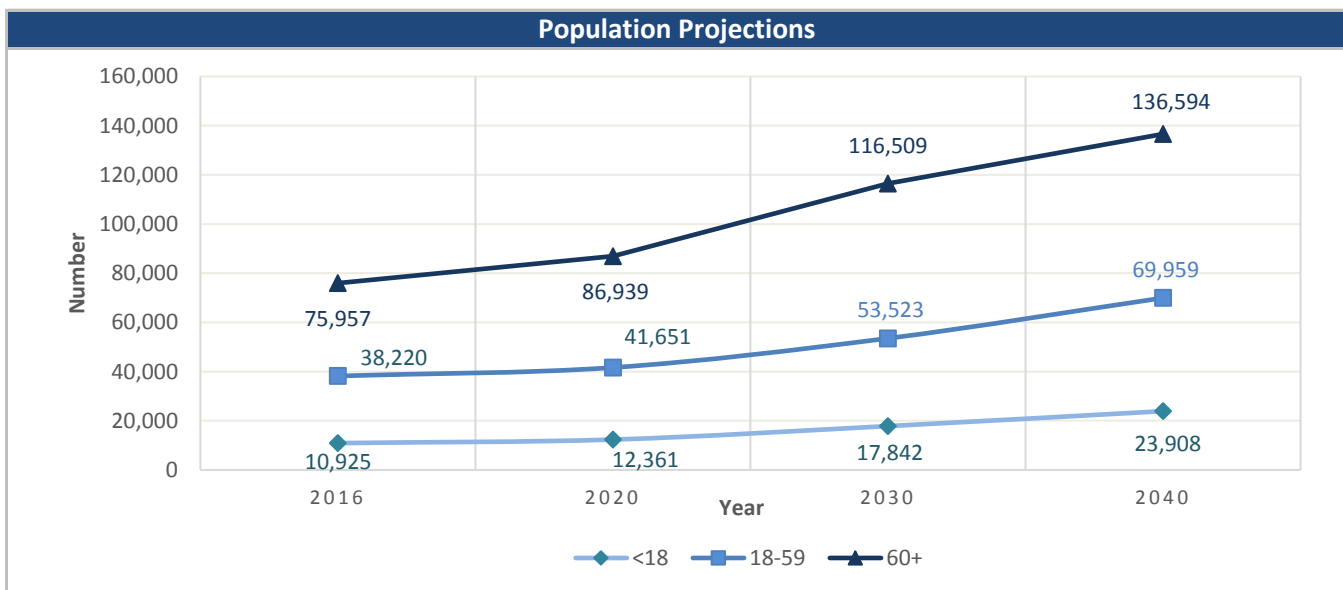
Source: EDR, 2016

English Proficiency	
With Limited English Proficiency <sup>1</sup>	218

Source: DOEA calculations based on EDR and 2010-14 ACS data

Financial Status		%
Below Poverty Guideline	4,368	5.8%
Below 125% of Poverty Guideline	6,237	8.2%
Minority Below Poverty Guideline	440	0.6%
Minority Below 125% of Poverty Guideline	660	0.9%

Source: DOEA calculations based on EDR and 2010-14 ACS data

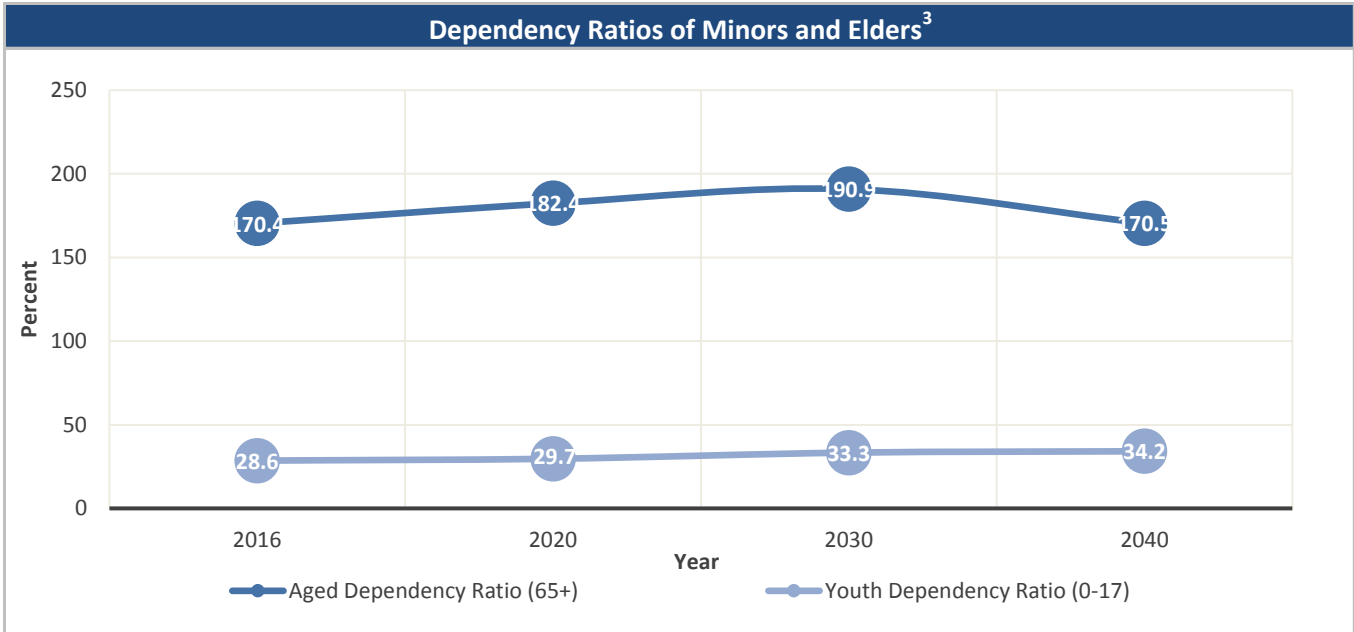


Source: Office of Economic and Demographic Research, 2016

Unless otherwise noted, the data presented in this *Profile* refers to elder populations in Florida age 60 and older.

# 2017 Profile of Older Floridians

Sumter



Source: Office of Economic and Demographic Research, 2016

Grandparents	
Living With Own Grandchildren*	799
Grandparent Responsible for Own Grandchildren*	412
Grandparent Not Responsible for Own Grandchildren*	387
Not Living With Own Grandchildren*	75,158

\*Grandchildren Under Age 18

Source: DOEA calculations based on EDR and 2010-14 ACS data

SNAP or Food Stamps	
Participants	1,386
Potentially Eligible	6,237
Participation Rate	22.2%

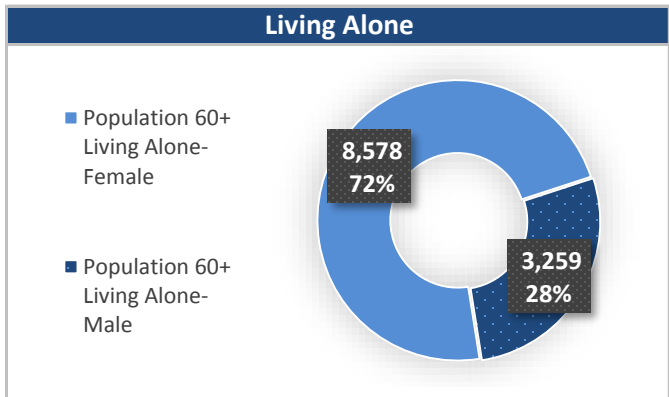
Source: Florida Department of Children and Families, 2016

Rural Designation	
Rural (Yes/No)	NO

Source: Rural Economic Development Initiative

Medically Underserved (65+)	
Total Medically Underserved <sup>4</sup>	16,523
Living in Areas Defined as Having Medically Underserved Populations	-
Living in Medically Underserved Areas	16,523

Source: DOH and U.S. HHS, Data as of 8/25/2017



Source: DOEA calculations based on EDR and 2010-14 ACS data

Unless otherwise noted, the data presented in this *Profile* refers to elder populations in Florida age 60 and older.

# 2017 Profile of Older Floridians

Summer

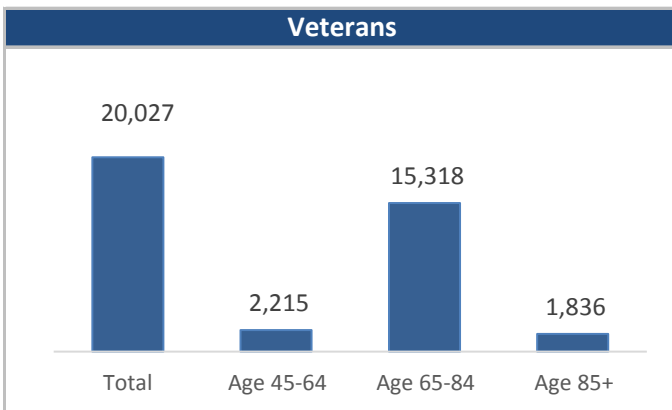


Florida Registered Voters	
Elder Voters	69,273
Percent of All Voters	75.5%

Source: FL Department of State, 2016

Florida Driver's License	
Elder Drivers	71,212
Percent of All Drivers	71.7%

Source: FL Department of Highway Safety & Motor Vehicles, 2016



Source: FL Department of Veterans' Affairs

Households With Cost Burden Above 30% and Income Below 50% Area Median Income (65+) <sup>5</sup>	
Elder Households	35,664
Percent of All Households	10.2%

Source: The Shimberg Center for Housing Studies, 2016

Cost of Living, Annual Expenses(65+) <sup>6</sup>	
<b>Single Elders</b>	
Owner without Mortgage	\$18,048
Renter, one bedroom	\$20,592
Owner with Mortgage	\$26,952
<b>Elder Couple</b>	
Owner without Mortgage	\$27,720
Renter, one bedroom	\$30,264
Owner with Mortgage	\$36,624

Source: Wider Opportunities for Women Elder Economic Security Standard™ Index (Elder Index), Data as of 8/16/2017

Retirement (65+)	
Disability Insurance (OASDI) Beneficiaries	57,668
Percent OASDI Beneficiaries	88.6%

Source: DOEA calculations based on EDR and the U.S. Social Security Administration data, 2016

Median Household Income for All Ages	
2011-2015	\$50,350

Source: U.S. Census Bureau, 2011-2015 American Community Survey 5-Year Estimates

Disability Status	
With One Type of Disability <sup>7</sup>	11,006
With Two or More Disabilities	6,814
<b>Total With Any Disability</b>	
Hearing	9,422
Vision	2,302
Cognitive	3,468
Ambulatory	8,354
Self-Care	2,382
Independent Living	4,892
With No Disabilities	58,149
Probable Alzheimer's Cases (65+) <sup>8</sup>	7,328

Source: DOEA calculations based on EDR, 2010-14 ACS data, and Alzheimer's Disease Facts and Figures Report, 2017

Medical Professionals	
<b>Medical Doctors</b>	
Licensed	123
Limited License	3
Critical Need Area License	3
Restricted	0
Medical Faculty Certification	0
Public Health Certificate	0
<b>Specialties</b>	
Licensed Podiatric Physicians	6
Licensed Osteopathic Physicians	16
Licensed Chiropractic Physicians	21
<b>Licensed Registered Nurses</b>	<b>973</b>

Source: Florida Department of Health, 2016

Unless otherwise noted, the data presented in this *Profile* refers to elder populations in Florida age 60 and older.

# 2017 Profile of Older Floridians

Summer



Skilled Nursing Facility (SNF) Utilization	
<b>SNF Beds</b>	312
Community Beds	250
Sheltered Beds	62
Veterans' Affairs Administration Beds	-
Other Beds	-
<b>SNFs With Beds</b>	4
Community Beds	3
Sheltered Beds	1
Veterans' Affairs Administration Beds	-
Other Beds	-
<b>SNFs With Community Beds</b>	3
Community Bed Days	91,500
Community Patient Days	79,587
Medicaid Patient Days	47,815
Occupancy Rate	87.0%
Percent Medicaid	60.1%

Assisted Living Facility	
<b>Total Beds</b>	825
OSS Beds <sup>9</sup>	0
Non-OSS Beds	825
<b>Total Facilities</b>	9
Facilities with ECC License <sup>10</sup>	1
Facilities with LMH License <sup>11</sup>	0
Facilities with LNS License <sup>12</sup>	3

Adult Family Care Homes	
Homes	1
Beds	5

Ambulatory Surgical Centers	
Facilities	3
Operating Rooms	6
Recovery Beds	12

Home Health Agencies	
<b>Agencies</b>	4
Medicaid Certified Agencies	-
Medicare Certified Agencies	2

Hospitals	
<b>Hospitals</b>	2
Hospitals with Skilled Nursing Units	0
<b>Hospital Beds</b>	337
Skilled Nursing Unit Beds	0

Homemaker & Companion Service Companies	
Companies	12

Medicaid & Medicare Eligibility	
Medicaid Eligible - All Ages	11,222
60+ Medicaid Eligible	1,803
Dual Eligible - All Ages	2,540
60+ Dual Eligible	1,649

Adult Day Care	
Facilities	3
Capacity	49

Source for Page: AHCA, 2016

# 2017 Profile of Older Floridians

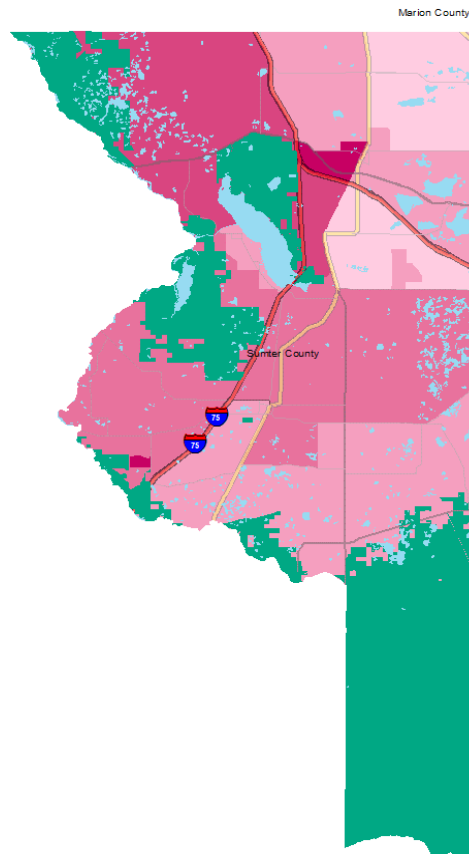
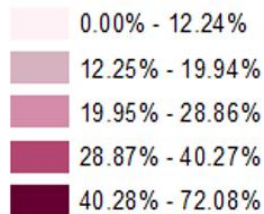
Sumter



## Elder Needs Index

### Elder Needs Index (all factors)

#### ENI



The Elder Needs Index (ENI) is a composite measure that includes: (1) the percentage of the 60 and older population that is age 85 and older; (2) the percentage of the 55 and older population who are members of racial or ethnic minority groups; (3) the percentage of the 65 and older population with one or more disability; and (4) the percentage of the 55 and older population living below 125% of the Federal Poverty Level. The Index is an averaged score that indicates senior citizens' overall level of risk for a probable need of social services within a geographic area. It is not a percentage of the area's population. The green areas of the map represent current conservation land such as national parks, state forests, wildlife management areas, local and private preserves. The blue areas of the map represent current water features such as lakes, streams, rivers, and coastlines. Complete maps available at [http://elderaffairs.state.fl.us/does/eni\\_home.php](http://elderaffairs.state.fl.us/does/eni_home.php)

Source: Florida Department of Elder Affairs using U.S. Census Bureau, 2008-12 ACS data

### Useful Websites

[Office of Economic & Demographic Research \(EDR\)](#)  
[U.S. Census Bureau, American Community Survey](#)  
[U.S. Census Bureau, Quick Facts](#)  
[Agency for Health Care Administration \(AHCA\)](#)

[FL Division of Emergency Management \(Shelters\)](#)  
[Florida Housing Data Clearinghouse](#)  
[County Chronic Disease Profile](#)

# 2017 Profile of Older Floridians

Sumter



<sup>1</sup> Those who report speaking English "Not well" or "Not at all" are defined as having Limited English Proficiency (LEP) in this profile.

<sup>2</sup> Total Minorities = (60+ Population) - (White Non-Hispanic 60+)

<sup>3</sup> A "dependency ratio" is commonly depicted as a ratio of workers to non-workers. Rather than using labor-force participation rates, which fluctuate, a stable dependency ratio can be estimated by using the number of individuals in the population who fall into age groups generally aligned with school-aged kids, working age adults, and retired seniors. For this graphic, working age adults (defined as 18-59) were compared to minors (age 0-17)(youth dependency ratio) and seniors (age 65+)(aged dependency ratio).

<sup>4</sup> Medically Underserved Areas/Populations are areas or populations designated by Health Resources & Services Administration(HRSA) as having too few primary care providers, high infant mortality, high poverty or a high elderly population.

<sup>5</sup> Households age 65 and older paying more than 30 percent of income for housing costs (including utilities) and have an income below 50 percent of the area median income.

<sup>6</sup> Wider Opportunities for Women Elder Economic Security Standard™ Index (Elder Index) measures how much income retired older adults require to meet their basic needs without public or private assistance. The Elder Index measures basic expenses for elders age 65+ living in the community, not in institutions. Annual expenses include: housing, including utilities, taxes, insurance; food; transportation; health care, based on good health; and miscellaneous. Data found at <http://www.basiceconomicsecurity.org/EI/>

<sup>7</sup> With One Type of Disability: 60+ people who have only one type of disability

<sup>8</sup> Probable Alzheimer's Cases = (65-74 Population x 0.035430) + (75-84 Population x 0.168209) + (85+ Population x 0.422937) Alzheimer's by Age in 2017 Alzheimer's Disease Facts and Figures Report used to develop calculation can be found at: [http://www.alz.org/documents\\_custom/facts\\_2017/statesheet\\_florida.pdf?type=interior\\_map&facts=undefined&facts=facts](http://www.alz.org/documents_custom/facts_2017/statesheet_florida.pdf?type=interior_map&facts=undefined&facts=facts)

<sup>9</sup> OSS Beds: Optional State Supplementation Beds. Optional State Supplementation (OSS) is a cash assistance program. Its purpose is to supplement a person's income to help pay for costs in an assisted living facility, mental health residential treatment facility, and adult family care home. It is NOT a Medicaid program.

<sup>10</sup> ECC License: Extended Congregate Care License. The ECC license is a specialty license that enables a facility to provide, directly or through contract, services beyond those permissible under the standard license, including acts performed by licensed nurses, and supportive services defined by rule to persons who otherwise would be disqualified from continued residence in a facility licensed under this part.

<sup>11</sup> LMH License: Limited Mental Health License. Any facility intending to admit three or more mental health residents must apply for and obtain a limited mental health license from AHCA's Assisted Living Unit before accepting the third mental health resident.

<sup>12</sup> LNS License: Limited Nursing Services License. The LNS license is a specialty license that enables a facility to provide a select number of nursing services.