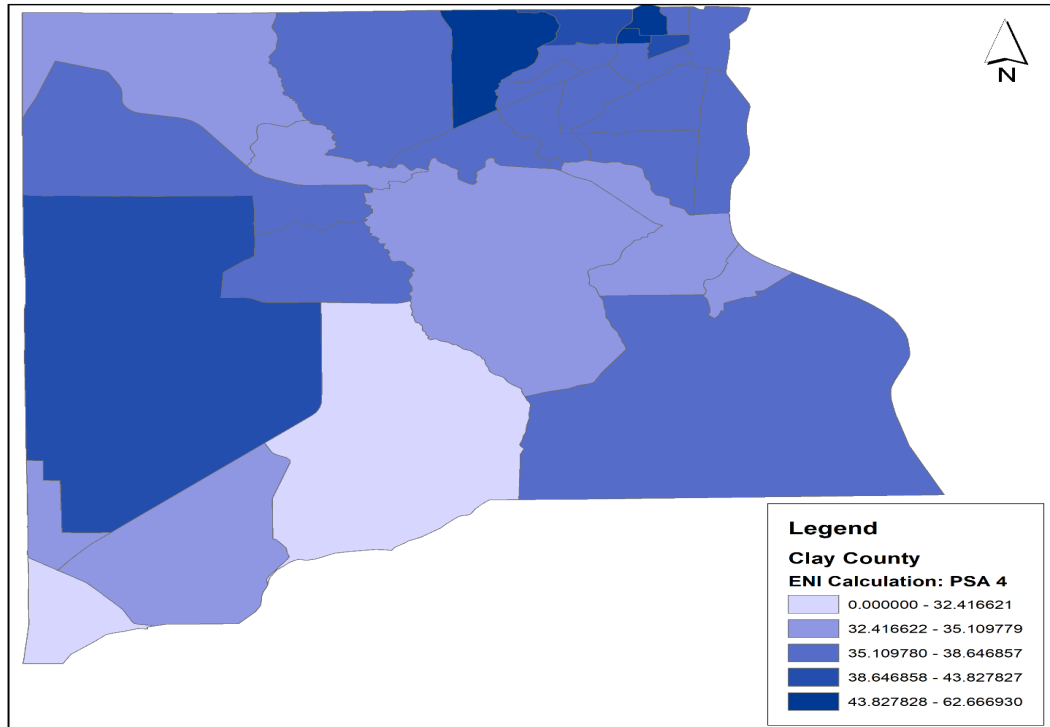


2021 Profile of Older Floridians

Clay County

This profile of older Floridians is a source of current information related to seniors in the county. Topics include the current and future population of older adults, the prevalence of older adults who experience financial and housing issues, the array of health and medical resources, and information related to disasters. As Florida's older adult population grows, awareness of these issues is needed to ensure that elders continue to be vital participants in their communities.

Elder Needs Index



The Elder Needs Index (ENI) is a measure that includes: (1) the percentage of the 60 and older population that is age 85 and older; (2) the percentage of the 55 and older population that are members of racial or ethnic minority groups; (3) the percentage of the 65 and older population with one or more disability; and (4) the percentage of the 55 and older population living below 125 percent of the Federal Poverty Level. ENI is an averaged score indicating older adults who may need social services within a geographic area. It is not a percentage of the area's population. Areas are color coded by their level of need, with light purple/blue areas representing areas with comparatively less need while the darker blue areas represent areas with high levels of need. The boundaries of Census Tracts correspond to the shape of each area on these maps. Interactive maps, viewing software, and a detailed user's guide are available at http://elderaffairs.state.fl.us/doea/eni_home.php

The index cutpoints in the ENI is scaled at the PSA-level for the PSA and County Profiles Maps, and at the State-Level for the State of Florida map.

Source: Florida Department of Elder Affairs using U.S. Census Bureau, 2015-2019 American Community Survey 5-Year Estimates

Useful Websites

Bureau of Economic and Business Research (BEBR)
U.S. Census Bureau, American Community Survey (ACS)
U.S. Census Bureau, Quick Facts
Florida Agency for Health Care Administration (AHCA)
Florida Department of Elder Affairs (DOEA)
How to Become an Age Friendly Community

Florida Division of Emergency Management (Shelters)
Florida Housing Data Clearinghouse
County Chronic Disease Profile
Aging Integrated Database (AGID)
Florida DOEA ENI Maps

2021 Profile of Older Floridians

Clay County Demographic Profile

The demographics section presents the population characteristics of those age 60 and older and examines traits about older Floridians, such as the number of veterans, voters, and drivers.

Age Category	Value	Percent
All Ages	219,575	100%
Under 18	53,077	24%
Under 60	171,320	78%
18-59	118,243	54%
60+	48,255	22%
65+	34,687	16%
70+	23,445	11%
75+	14,100	6%
80+	7,615	3%
85+	3,533	2%

Source: BEBR, 2021

Gender	Value	Percent
Male	22,035	46%
Female	26,220	54%

Source: BEBR, 2021

Living Alone	Value	Percent
Male Living Alone	3,220	7%
Female Living Alone	5,070	11%

Source: AGID 2014-18 ACS

Educational Attainment (65+)	Value	Percent
Less than High School	3,292	7%
High School Diploma	11,511	25%
Some College, No Degree	7,069	15%
Associates Degree or Higher	10,671	23%

Source: U.S. Census Bureau, 2015-2019 ACS

Marital Status	Male	Female
Never Married	490	695
Percentage Never Married	2%	3%
Married	15,490	12,865
Percentage Married	77%	56%
Widowed	1,875	5,805
Percentage Widowed	9%	25%
Divorced	2,350	3,735
Percentage Divorced	12%	16%

Source: AGID 2014-18 ACS

Note: The American Community Survey (ACS) requires a minimum of 50 cases in a geographic area and therefore a value of 0 may denote fewer than 50 seniors in a region.

Race and Ethnicity	Value	Percent
White	42,609	88%
Black	3,742	8%
Other Minorities	1,904	4%
Total Hispanic	2,784	6%
White Hispanic	2,388	5%
Non-White Hispanic	396	1%
Total Non-Hispanic	45,471	94%
Total Minority	8,430	17%

The minority population is the summation of black, other, and Hispanic
Source: BEBR, 2021

Driver License Holders	Value	Percent
Drivers	50,261	28%

Source: Florida Department of Highway Safety and Motor Vehicles, 2021

Registered Voters	Value	Percent
Registered Voters	47,953	30%

Source: Florida Department of State, 2018

Veterans	Value	Percent
Age 45-64	10,519	41%
Age 65-84	7,989	31%
Age 85+	1,230	5%

Source: U.S. Department of Veterans Affairs, 2018

Grandparents	Value	Percent
Living With Grandchildren	3,325	7%
Grandparent Responsible for Grandchildren	1,105	2%
Grandparent Not Responsible for Grandchildren	2,220	5%
Not Living With Grandchildren	39,335	82%

Grandchildren are defined as being under the age of 18.

Source: AGID 2014-18 ACS

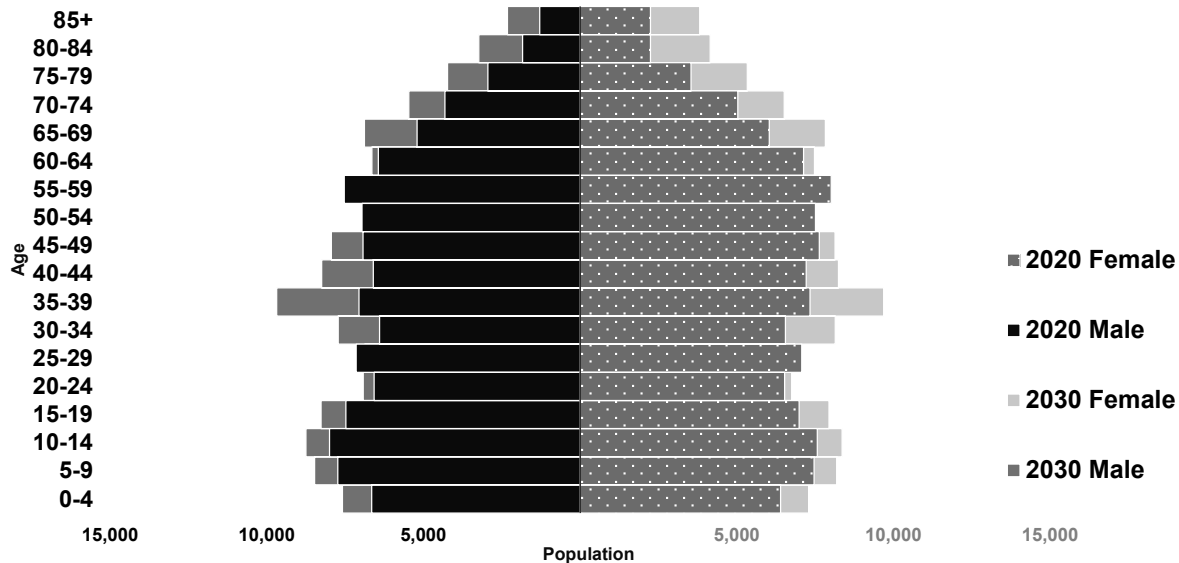
English Proficiency	Value	Percent
With Limited English Proficiency	880	2%

Source: AGID 2014-18 ACS

2021 Profile of Older Floridians

Clay County Demographic Profile

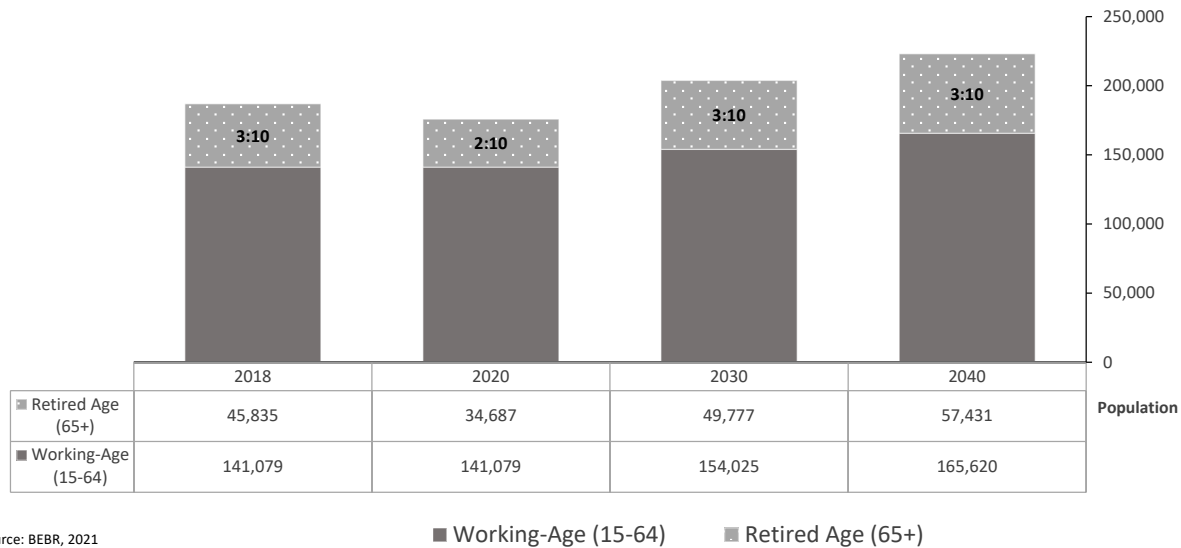
The population pyramid below compares the projected older adult population by gender between 2018 and 2030, demonstrating the changes expected in the next decade. As a whole, Florida is expected to experience population growth, with some areas expecting notable growth in the proportion of those age 65 and older.



Source: BEBR, 2021

Older Adult Dependency Ratio

The dependency ratio contrasts the number of working-age (15-64) individuals compared to the number of individuals age 65 and older who are likely retired from the workforce. This ratio reflects the ongoing contributions of taxes and wages to support the health care and retirement systems used by retirees, as well as the availability of younger individuals to serve as caregivers to older loved ones.



Source: BEBR, 2021

2021 Profile of Older Floridians

Clay County Financial Profile

This section examines financial conditions, poverty rates, and the cost of living for older Floridians. The ratio of income to poverty level graphic below shows the distribution of older adults relative to the poverty level to show the proportion of the senior population who fall below the Federal Poverty Level (FPL). The portrayal of the financial conditions of older adults is detailed in the final graphic, which includes information about income relative to rates of homeownership and partnership status in the consideration of cost of living.

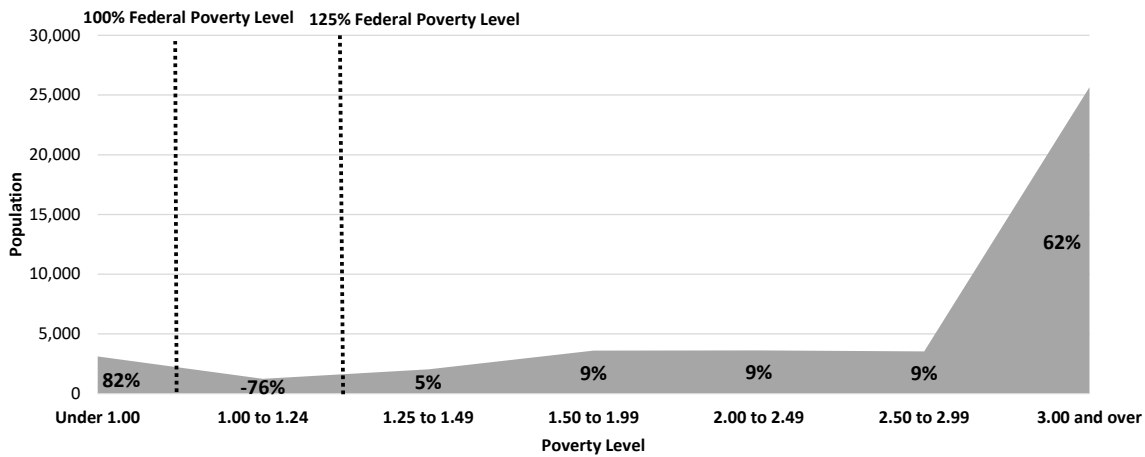
Federal Poverty Level	Value
Single-Person Household	\$12,140
Two-Person Household	\$16,460
125% Single-Person Household	\$15,175
125% Two-Person Household	\$20,575

Source: U.S. Department of Health & Human Services, 2021

Poverty	Value	Percent
At Poverty Level	39,675	82%
Below 125% of Poverty Level	3,120	6%
Minority At Poverty Level	5,755	12%
Minority Below 125% of Poverty Level	755	2%

Source: AGID 2014-18 ACS

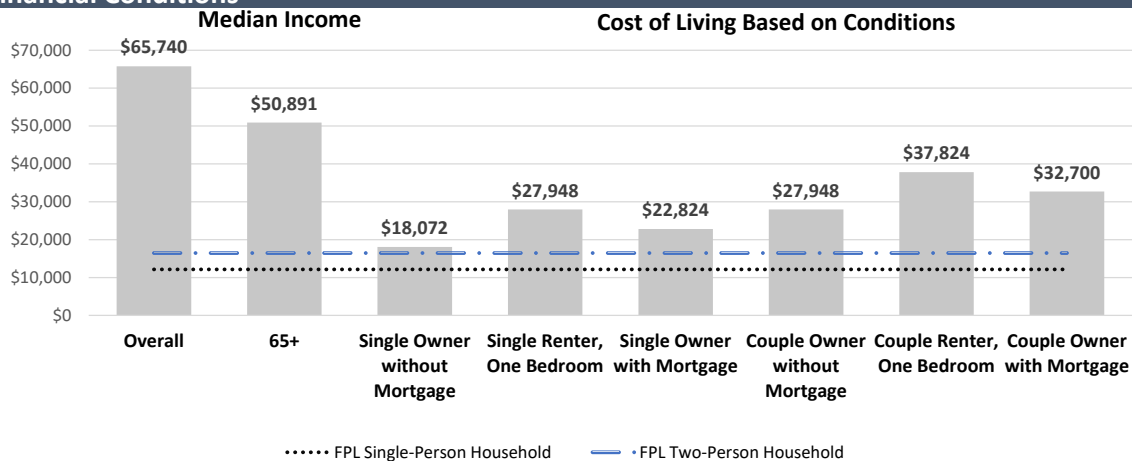
Ratio of Income to Poverty Level



Value is expressed as the percentage of the 60+ population, with the dotted lines representing the Federal Poverty Level.

Source: AGID 2014-18 ACS

Financial Conditions



Cost of living is an index of how much income retired older adults require to meet their basic needs to live in their community without assistance.

Source: U.S. Census Bureau, 2015-2019 ACS and Elder Index. (2020). The Elder Index™ [Public Dataset]. Boston, MA: Gerontology Institute, University of Massachusetts Boston. Retrieved from ElderIndex.org, 201

2021 Profile of Older Floridians

Clay County Livability Profile

The livability section presents new elements, such as available affordable housing for older adults. Many essential community elements are also included below, such as sidewalk safety, the safety of roadways, and availability of green spaces. The rates of older Floridians who have access to a vehicle or public transportation, as well as the availability of internet access and various food resources, are also provided. These provide estimates of older adults' ability to access community resources.

Pedestrian Safety	Percent
Sidewalks with Barriers	29%
Physical barriers are those that separate motorized vehicle lanes from sidewalks or shared path (e.g. areas for parking lots, guardrail, trees, etc.).	
Source: Florida Department of Transportation, 2021	

Road Incidents	Value
Total Involved in Fatal Car Crashes per 100,000	46
This figure includes occupants and non-occupants involved in a crash.	
Source: Florida Department of Highway Safety and Motor Vehicles, 2020	

Internet Access (65+)	Percent
Have Internet Access	89%
Source: U.S. Census Bureau, 2015-2019 ACS	

Food Resource Centers	Value
SNAP Access Sites	1
Fresh Access Bucks Outlet	1
Farmer's Market	1
Food Distribution (No Cost)	10
SNAP Retailers	137
Congregate Meal Sites	3
Food Distribution (No Cost) is the number of food pantries, soup kitchens, and food banks in the area.	
Source: Feeding Florida.org, USDA, FDACS, 2021, and Florida DOE, 2019	

Public Transportation Options	Value
Bus Operations at least at the County	0
Rail Operations at least at the County	0
Public Transit Service Area (sq. mi.)	0
Public Transit Service Area Population	0
Annual Unlinked Trips	0
Vehicles Operated in Maximum Service (VOMS)	0
Total Miles of Bike Lanes	45
Information on service area is not reported by rural and intercity public transit.	
VOMS are the number of vehicles operated to meet the annual max service, and unlinked trips are the number of passengers boarding public transit.	
Source: Federal Transit Administration, 2017, and FDOT, 2019	

Green Space	Value
Number of Nearby State Parks	2
Nearby refers to the park that has the shortest distance from the center of the county.	
Source: Florida Department of Environmental Protection, 2021	

Rural-Urban Designation	Value
Census Tracts Rural	0%
Census Tracts Urban	100%
Number of Census Tracts	30
Source: U.S. Department of Agriculture, 2019	

Households With High Cost Burden (65+)	Value
Owner-Occupied Households	8,933
Percent of Owners with High Cost Burden	9%
Renter-Occupied Households	2,941
Percent of Renters with High Cost Burden	27%
Households with a high cost burden have occupants age 65+ paying more than 30% of income for housing costs and having an income below 50% of the area median income.	
Source: The Shimberg Center for Housing Studies, 2020	

Affordable Housing Inventory	Value
Properties	3
Properties Ready for Occupancy	3
Total Units	203
Units with Rent and/or Income Restrictions	202
Units Receiving Monthly Rental Assistance	0
Affordable housing inventory receives funding from HUD, Florida Housing Financing Corp., and the USDA. The inventory above includes older adults as its target population.	
Source: The Shimberg Center for Housing Studies, 2020	

Housing Units by Occupancy (65+)	Percent
Owner-Occupied Housing Units	28%
Renter-Occupied Housing Units	13%
Source: U.S. Census Bureau, 2015-2019 ACS	

Vehicle Access (65+)	Percent
Owner-Occupied Households with Access to Vehicle(s)	97%
Renter-Occupied Households with Access to Vehicle(s)	81%
Source: U.S. Census Bureau, 2015-2019 ACS	

Employment Status (65+)	Value	Percent
Number of Seniors Employed	10,395	23%
Number of Seniors Unemployed	485	1%
Source: U.S. Census Bureau, 2015-2019 ACS		

Retirement (65+)	Value	Percent
Social Security Beneficiaries	34,155	74%
SSI Recipients	558	17%
SSI stands for Supplemental Security Income. To qualify, a person must be at least age 65 OR be blind or disabled. Also, the person must have limited income and resources.		
Source: U.S. Social Security Administration, 2019		

SNAP or Food Stamps	Value
Potentially Eligible	3,120
Annual Participants	3,498
Current Beneficiaries as of Dec-20	2,810
Percent of Total Population Receiving Benefits	7%
Potentially Eligible are individuals below 125% of the Federal Poverty Level	
Source: Florida Department of Children and Families, 2020	

2021 Profile of Older Floridians

Clay County Health Profile and Medical Resources

The health and medical section presents the variety and availability of different types of facilities, medical professionals, and treatment services in the community. This includes complex estimates based on probable usage by older adults. For example, the "Medically Underserved" are areas designated by the U.S. Department of Health and Human Services as having too few primary care providers, high infant mortality, high poverty, or a high elderly population. Medical access and health support services information is an important area for community planners to ensure that support is in place to accommodate an older population.

Ambulatory Surgical Centers	Value
Facilities	5
Operating Rooms	14
Recovery Beds	36

Source: Florida AHCA, 2021

Hospitals	Value
Hospitals	3
Hospitals with Skilled Nursing Units	0
Hospital Beds	572
Skilled Nursing Unit Beds	0

Source: Florida AHCA, 2021

Medical Professionals	Value
Medical Doctors	
Licensed	126
Limited License	1
Critical Need Area License	9
Restricted	0
Medical Faculty Certification	1
Public Health Certificate	0
Other Professionals	
Licensed Podiatric Physicians	12
Licensed Osteopathic Physicians	60
Dentists	97
Licensed Registered Nurses	3,886
Pharmacies	51

Source: Florida Department of Health, 2021

Assisted Living Facility	Value
Total ALF Beds	860
Optional State Supplementation (OSS) Beds	31
Non-OSS Beds	829
Total ALF Facilities	16
Facilities with Extended Congregate Care License	3
Facilities with Limited Mental Health License	1
Facilities with Limited Nursing Service License	5

Source: Florida AHCA, 2021

Medically Underserved	Value	Percent
Total Medically Underserved	508	1%
Living in Areas Defined as Having Medically Underserved Populations	0	0%
Living in Medically Underserved Areas	508	1%

Source: Calculated using U.S. Health Resources & Services Administration and AGID

Health Insurance 65+	Value	Percent
Insured	31,875	70%
Uninsured	224	30%

Source: U.S. Census Bureau, 2015-2019 ACS

Disability Status	Value	Percent
With One Type of Disability	7,455	15%
With Two or More Disabilities	6,380	13%
Total With Any Disability		
Hearing	5,010	10%
Vision	2,045	4%
Cognitive	3,070	6%
Ambulatory	9,010	19%
Self-Care	2,615	5%
Independent Living	4,570	9%
With No Disabilities	28,960	60%
Probable Alzheimer's Cases (65+)	4,128	9%

Source: AGID 2014-18 ACS

Medicaid & Medicare Beneficiaries	Value	Percent
60+ Medicaid Eligible	4,116	11%
60+ Dual Eligible	3,624	69%

Source: Florida AHCA, 2021

Adult Day Care (ADC)	Value
ADC Facilities	1
Capacity	35

Source: Florida AHCA, 2021

Home Health Agencies	Value
Agencies	15
Medicaid Certified Agencies	0
Medicare Certified Agencies	7
Homemaker and Companion Service Companies	19

Source: Florida AHCA, 2021

2021 Profile of Older Floridians

Clay County Health Profile and Medical Resources

Skilled Nursing Facility (SNF) Use	Value
SNFs With Beds	10
Community Beds	10
Sheltered Beds	1
Veterans Administration Beds	0
Other Beds	0
SNF Beds	1,260
Community Beds	1,250
Sheltered Beds	10
Veterans Administration Beds	0
Other Beds	0
SNFs With Community Beds	10
Community Bed Days	426,660
Community Patient Days	338,580
Medicaid Patient Days	197,507
Occupancy Rate	79%
Percent Medicaid	58%

The day the patient is admitted is a patient day. A bed day is a day during which a person is confined to a bed and in which the patient stays overnight in a hospital.

Source: Florida AHCA, 2021

Emergency Medical Services (EMS) Providers	Value
--	-------

2

EMS providers include air ambulances and ambulances with Basic Life Support (BLS) or Advanced Life Support (ALS).

Source: Florida Department of Health, 2021

Adult Family Care Homes	Value
Homes	2
Beds	10

Source: Florida AHCA, 2021

Memory Disorder Clinics	Value
Total	0

Source: Florida DOEA's Summary of Programs and Services (SOPS), 2020

Dialysis	Value
End-Stage Renal Disease Centers	7

Source: Florida Department of Health, 2021

Clay County Disaster Preparedness

The disaster preparedness section presents the count and percentage of people age 60 or older living in the legislative district that fall within particular storm surge evacuation zones, as well as the number of DOEA Home and Community-Based Services (HCBS) clients who reside in these zones. The estimate of electricity-dependent individuals is presented by insurance type to show the number of people who use electricity-dependent medical equipment necessary for things such as survival or mobility. This information can also be used to evaluate the sufficiency of shelters, generators, and evacuation route roadways to handle the needs of seniors and medically fragile adults in emergencies.

Electricity-Dependent	Value
Medicare Beneficiary	2,049
Medicaid Beneficiary	60

Medicare beneficiary includes the entire Medicare population (65+ and SSI Recipients).

Medicaid beneficiaries are individuals age 60 to 64.

Source: Florida AHCA and U.S. Centers for Medicare & Medicaid Services, 2021

Shelter Resources	Value
Number of General Shelters	24
General Shelter Max Capacity in People	10,213
Number of Special Needs Shelters	2
Special Needs Shelters Max Capacity in People	369

Source: FDEM, 2021

Evacuation Zones	Value	Percent
DOEA HCBS Clients Residing in Evac Zone:	157	0%
Zone A	12	0%
Zone B	30	0%
Zone C	0	0%
Zone D	115	0%
Zone E	0	0%
DOEA HCBS Clients	1,020	
Lives in an Evac Zone and Has Memory Problems	9	1%
Lives in an Evac Zone and Lives Alone	40	4%

Zones are associated with the following surge heights: Zone A up to 11 feet, Zone B up to 15 feet,

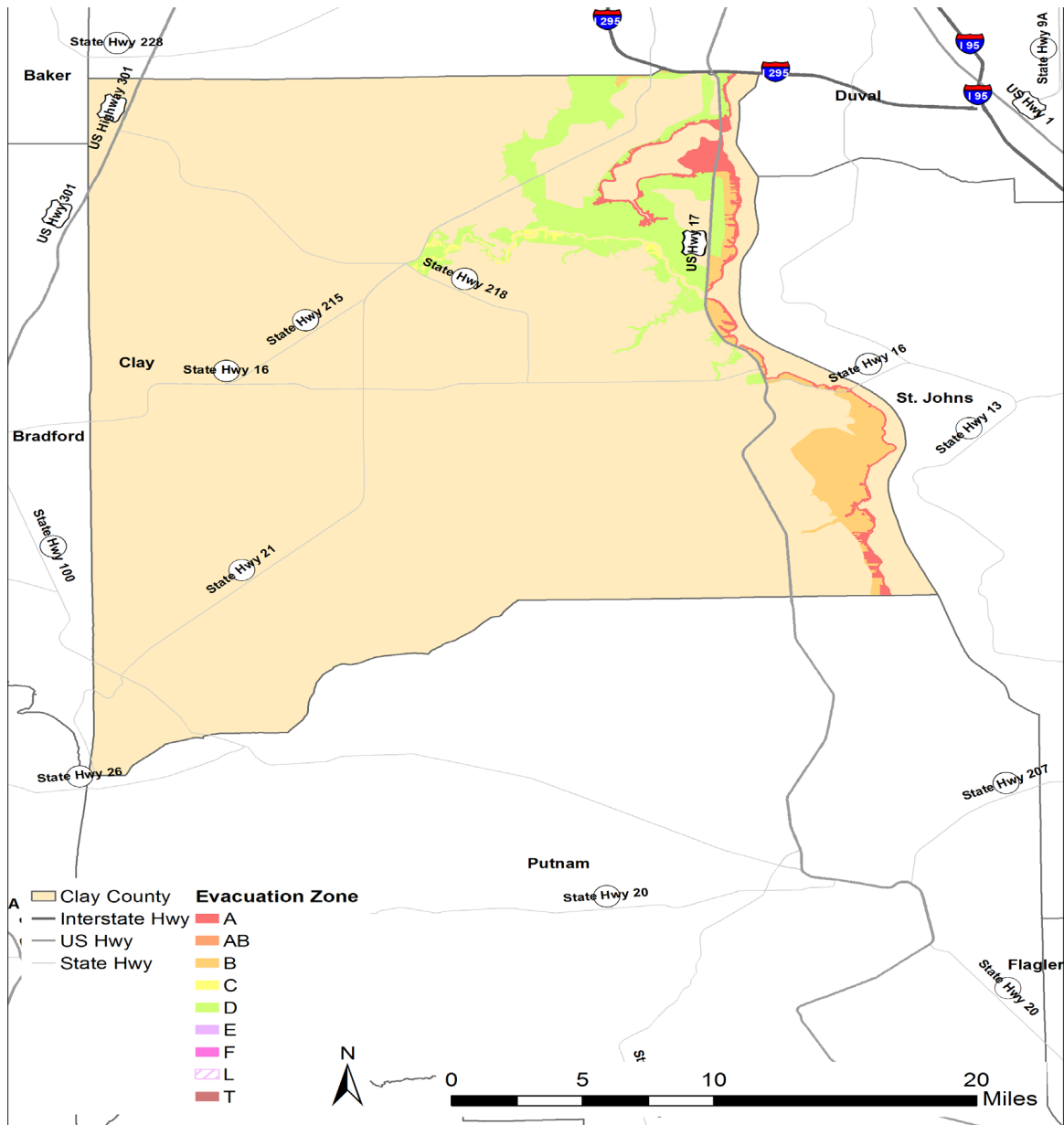
Zone C up to 20 feet, Zone D up to 28 feet, and Zone E up to 35 feet.

Source: Florida DOEA CIRTS, Florida Division of Emergency Management (FDEM), 2021

2021 Profile of Older Floridians

Clay County Disaster Preparedness

Evacuation Zones



Zones are associated with the following surge heights: Zone A up to 11 feet, Zone B up to 15 feet, Zone C up to 20 feet, Zone D up to 28 feet, and Zone E up to 35 feet.

Source: FDEM, 2021