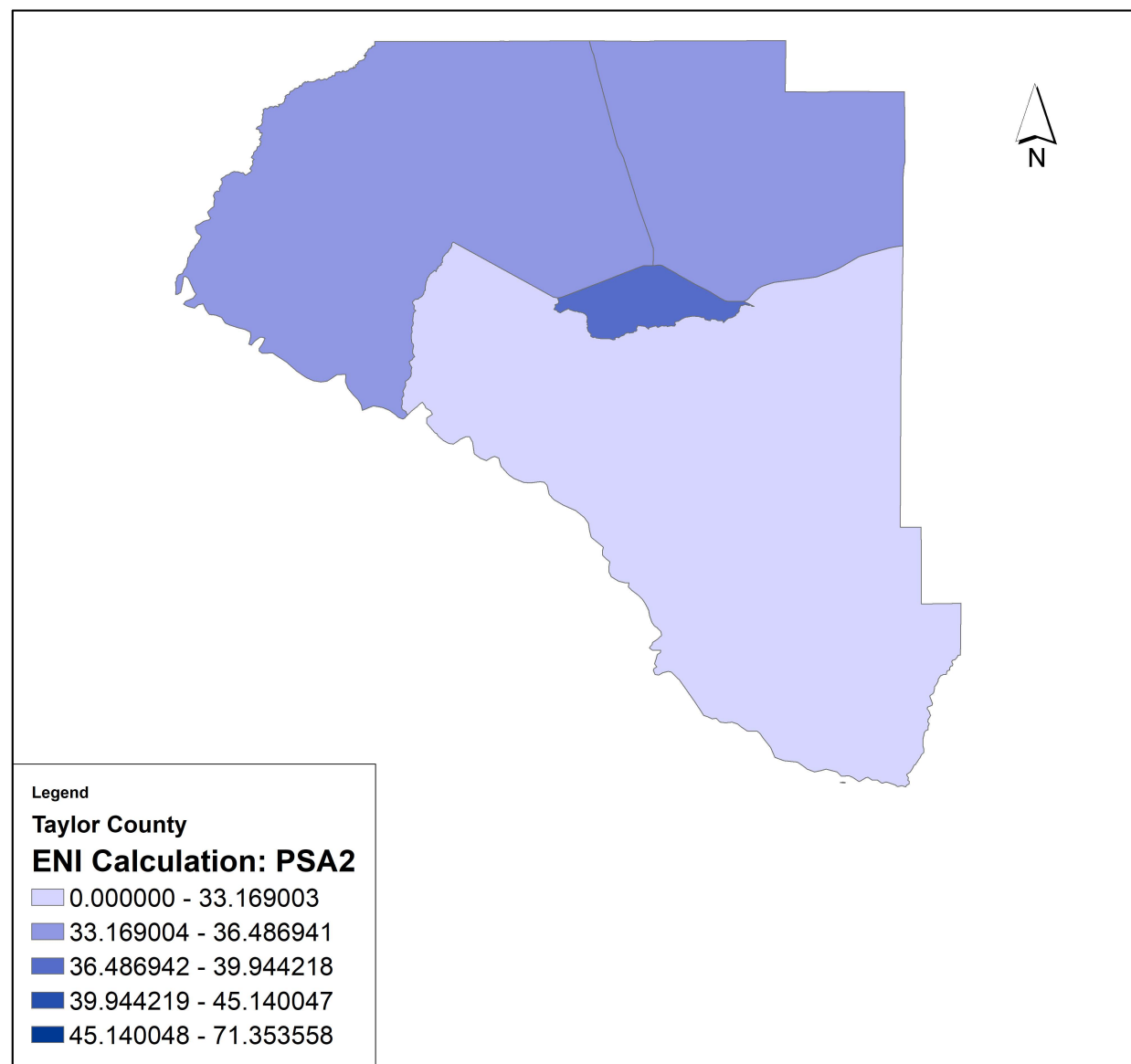


# 2021 Profile of Older Floridians

## Taylor County

This profile of older Floridians is a source of current information related to seniors in the county. Topics include the current and future population of older adults, the prevalence of older adults who experience financial and housing issues, the array of health and medical resources, and information related to disasters. As Florida's older adult population grows, awareness of these issues is needed to ensure that elders continue to be vital participants in their communities.

## Elder Needs Index



The Elder Needs Index (ENI) is a measure that includes: (1) the percentage of the 60 and older population that is age 85 and older; (2) the percentage of the 55 and older population that are members of racial or ethnic minority groups; (3) the percentage of the 65 and older population with one or more disability; and (4) the percentage of the 55 and older population living below 125 percent of the Federal Poverty Level. ENI is an averaged score indicating older adults who may need social services within a geographic area. It is not a percentage of the area's population. Areas are color coded by their level of need, with light purple/blue areas representing areas with comparatively less need while the darker blue areas represent areas with high levels of need. The boundaries of Census Tracts correspond to the shape of each area on these maps. Interactive maps, viewing software, and a detailed user's guide are available at [http://elderaffairs.state.fl.us/doea/eni\\_home.php](http://elderaffairs.state.fl.us/doea/eni_home.php)

The index cutpoints in the ENI is scaled at the PSA-level for the PSA and County Profiles Maps, and at the State-Level for the State of Florida map.

Source: Florida Department of Elder Affairs using U.S. Census Bureau, 2015-2019 American Community Survey 5-Year Estimates

## Useful Websites

Bureau of Economic and Business Research (BEBR)  
U.S. Census Bureau, American Community Survey (ACS)  
U.S. Census Bureau, Quick Facts  
Florida Agency for Health Care Administration (AHCA)  
Florida Department of Elder Affairs (DOEA)  
How to Become an Age Friendly Community

Florida Division of Emergency Management (Shelters)  
Florida Housing Data Clearinghouse  
County Chronic Disease Profile  
Aging Integrated Database (AGID)  
Florida DOEA ENI Maps

# 2021 Profile of Older Floridians

## Taylor County Demographic Profile

The demographics section presents the population characteristics of those age 60 and older and examines traits about older Floridians, such as the number of veterans, voters, and drivers.

Age Category	Value	Percent
All Ages	22,436	100%
Under 18	4,387	20%
Under 60	15,824	71%
18-59	11,437	51%
60+	6,612	29%
65+	4,987	22%
70+	3,427	15%
75+	2,061	9%
80+	1,069	5%
85+	434	2%

Source: BEBR, 2021

Gender	Value	Percent
Male	3,169	48%
Female	3,443	52%

Source: BEBR, 2021

Living Alone	Value	Percent
Male Living Alone	465	7%
Female Living Alone	765	12%

Source: AGID 2014-18 ACS

Educational Attainment (65+)	Value	Percent
Less than High School	807	12%
High School Diploma	2,033	31%
Some College, No Degree	875	13%
Associates Degree or Higher	589	9%

Source: U.S. Census Bureau, 2015-2019 ACS

Marital Status	Male	Female
<b>Never Married</b>	145	105
Percentage Never Married	5%	3%
<b>Married</b>	1,965	1,625
Percentage Married	69%	54%
<b>Widowed</b>	235	980
Percentage Widowed	8%	32%
<b>Divorced</b>	485	325
Percentage Divorced	17%	11%

Source: AGID 2014-18 ACS

**Note:** The American Community Survey (ACS) requires a minimum of 50 cases in a geographic area and therefore a value of 0 may denote fewer than 50 seniors in a region.

Race and Ethnicity	Value	Percent
White	5,700	86%
Black	835	13%
Other Minorities	77	1%
<b>Total Hispanic</b>	93	1%
White Hispanic	82	1%
Non-White Hispanic	11	0%
Total Non-Hispanic	6,519	99%
Total Minority	1,005	15%

The minority population is the summation of black, other, and Hispanic

Source: BEBR, 2021

Driver License Holders	Value	Percent
Drivers	11,686	36%

Source: Florida Department of Highway Safety and Motor Vehicles, 2021

Registered Voters	Value	Percent
Registered Voters	5,029	39%

Source: Florida Department of State, 2018

Veterans	Value	Percent
Age 45-64	556	36%
Age 65-84	679	44%
Age 85+	103	7%

Source: U.S. Department of Veterans Affairs, 2018

Grandparents	Value	Percent
<b>Living With Grandchildren</b>	425	6%
Grandparent Responsible for Grandchildren	155	2%
Grandparent Not Responsible for Grandchildren	270	4%
<b>Not Living With Grandchildren</b>	5,040	76%

Grandchildren are defined as being under the age of 18.

Source: AGID 2014-18 ACS

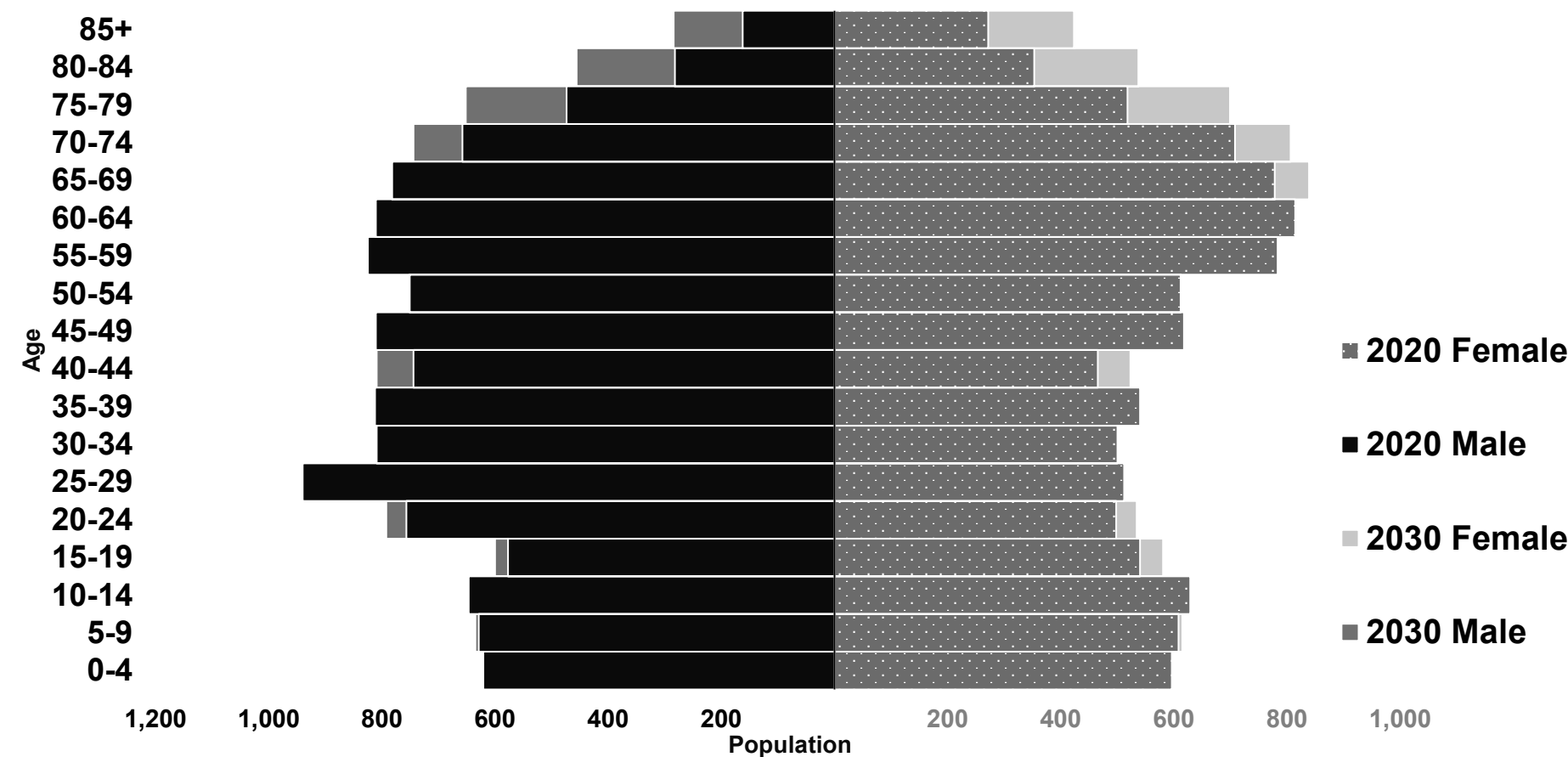
English Proficiency	Value	Percent
With Limited English Proficiency	24	0%

Source: AGID 2014-18 ACS

# 2021 Profile of Older Floridians

## Taylor County Demographic Profile

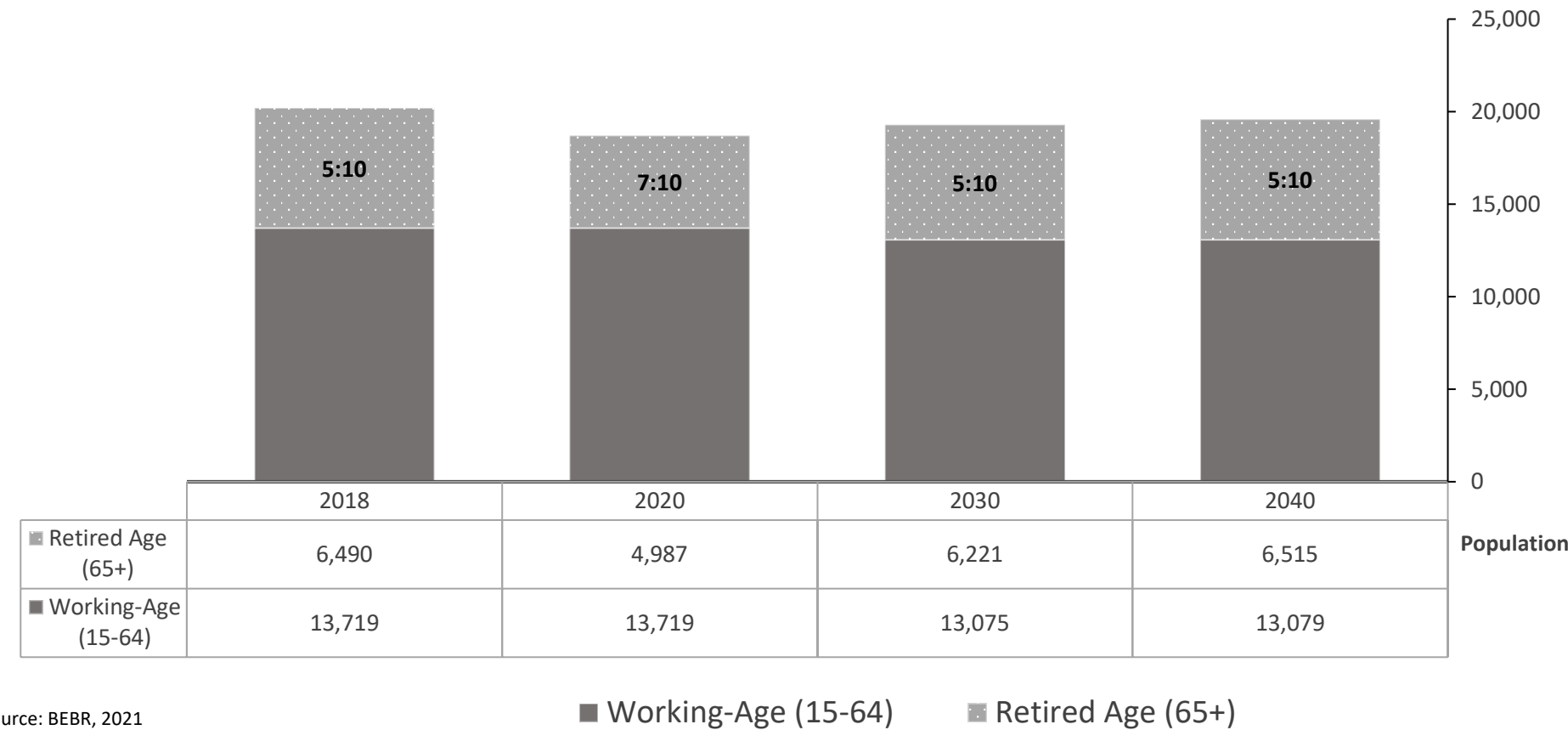
The population pyramid below compares the projected older adult population by gender between 2018 and 2030, demonstrating the changes expected in the next decade. As a whole, Florida is expected to experience population growth, with some areas expecting notable growth in the proportion of those age 65 and older.



Source: BEBR, 2021

## Older Adult Dependency Ratio

The dependency ratio contrasts the number of working-age (15-64) individuals compared to the number of individuals age 65 and older who are likely retired from the workforce. This ratio reflects the ongoing contributions of taxes and wages to support the health care and retirement systems used by retirees, as well as the availability of younger individuals to serve as caregivers to older loved ones.



Source: BEBR, 2021

# 2021 Profile of Older Floridians

## Taylor County Financial Profile

This section examines financial conditions, poverty rates, and the cost of living for older Floridians. The ratio of income to poverty level graphic below shows the distribution of older adults relative to the poverty level to show the proportion of the senior population who fall below the Federal Poverty Level (FPL). The portrayal of the financial conditions of older adults is detailed in the final graphic, which includes information about income relative to rates of homeownership and partnership status in the consideration of cost of living.

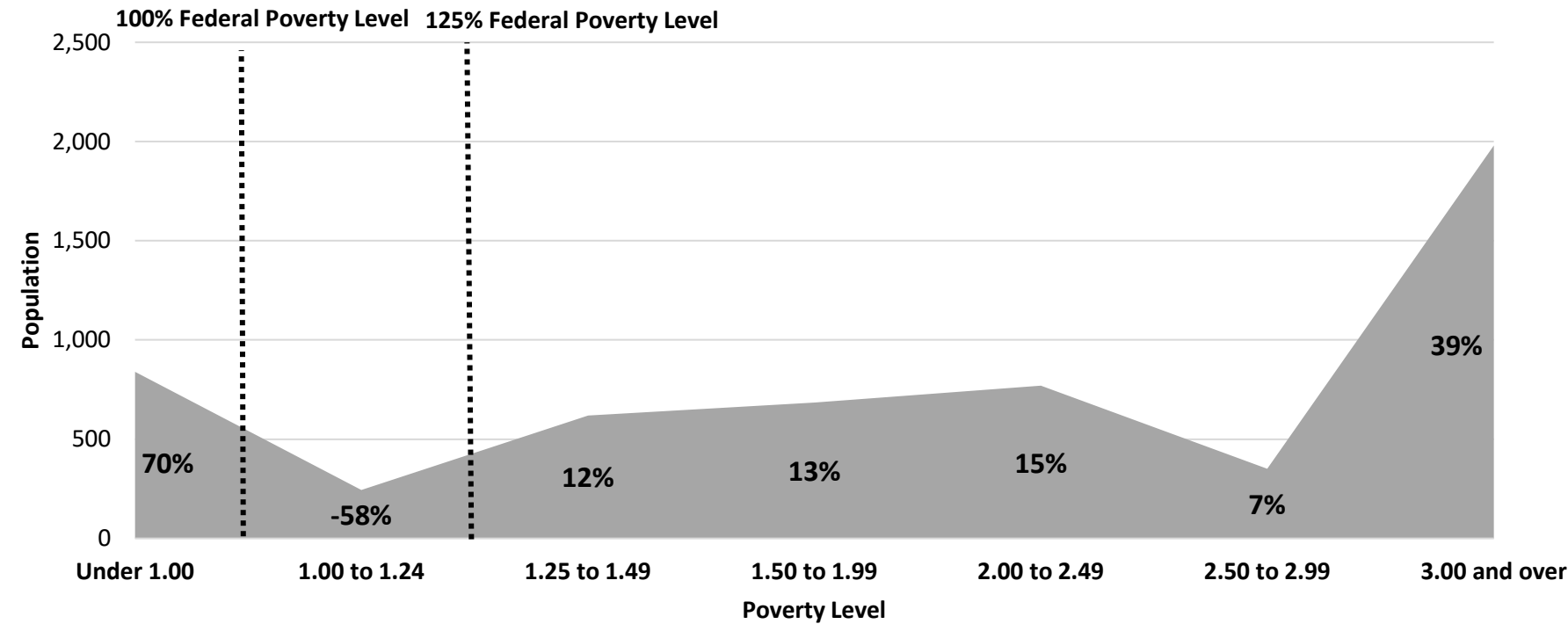
Federal Poverty Level	Value
Single-Person Household	\$12,140
Two-Person Household	\$16,460
125% Single-Person Household	\$15,175
125% Two-Person Household	\$20,575

Source: U.S. Department of Health & Human Services, 2021

Poverty	Value	Percent
At Poverty Level	4,645	70%
Below 125% of Poverty Level	833	13%
Minority At Poverty Level	590	9%
Minority Below 125% of Poverty Level	258	4%

Source: AGID 2014-18 ACS

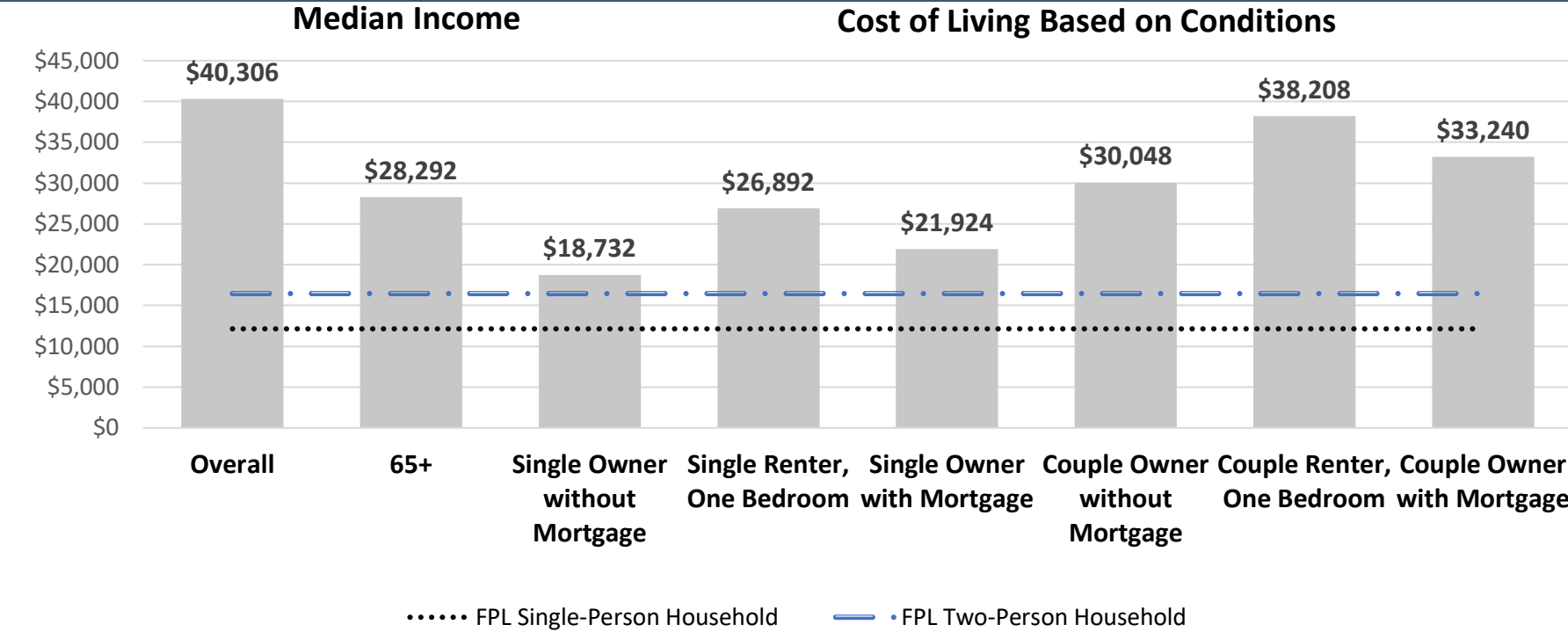
## Ratio of Income to Poverty Level



Value is expressed as the percentage of the 60+ population, with the dotted lines representing the Federal Poverty Level.

Source: AGID 2014-18 ACS

## Financial Conditions



Cost of living is an index of how much income retired older adults require to meet their basic needs to live in their community without assistance.

Source: U.S. Census Bureau, 2015-2019 ACS and Elder Index. (2020). The Elder Index™ [Public Dataset]. Boston, MA: Gerontology Institute, University of Massachusetts Boston. Retrieved from ElderIndex.org, 2

# 2021 Profile of Older Floridians

## Taylor County Livability Profile

The livability section presents new elements, such as available affordable housing for older adults. Many essential community elements are also included below, such as sidewalk safety, the safety of roadways, and availability of green spaces. The rates of older Floridians who have access to a vehicle or public transportation, as well as the availability of internet access and various food resources, are also provided. These provide estimates of older adults' ability to access community resources.

Pedestrian Safety	Percent
Sidewalks with Barriers	39%
Physical barriers are those that separate motorized vehicle lanes from sidewalks or shared path (e.g. areas for parking lots, guardrail, trees, etc.).	
Source: Florida Department of Transportation, 2021	

Road Incidents	Value
Total Involved in Fatal Car Crashes per 100,000	22
This figure includes occupants and non-occupants involved in a crash.	
Source: Florida Department of Highway Safety and Motor Vehicles, 2020	

Internet Access (65+)	Percent
Have Internet Access	78%
Source: U.S. Census Bureau, 2015-2019 ACS	

Food Resource Centers	Value
SNAP Access Sites	2
Fresh Access Bucks Outlet	0
Farmer's Market	0
Food Distribution (No Cost)	1
SNAP Retailers	28
Congregate Meal Sites	1
Food Distribution (No Cost) is the number of food pantries, soup kitchens, and food banks in the area.	
Source: Feeding Florida.org, USDA, FDACS, 2021, and Florida DOEA, 2019	

Public Transportation Options	Value
Bus Operations at least at the County	0
Rail Operations at least at the County	0
Public Transit Service Area (sq. mi.)	0
Public Transit Service Area Population	0
Annual Unlinked Trips	0
Vehicles Operated in Maximum Service (VOMS)	0
Total Miles of Bike Lanes	5
Information on service area is not reported by rural and intercity public transit.	
VOMS are the number of vehicles operated to meet the annual max service, and unlinked trips are the number of passengers boarding public transit.	
Source: Federal Transit Administration, 2017, and FDOT, 2019	

Green Space	Value
Number of Nearby State Parks	2
Nearby refers to the park that has the shortest distance from the center of the county.	
Source: Florida Department of Environmental Protection, 2021	

Rural-Urban Designation	Value
Census Tracts Rural	100%
Census Tracts Urban	0%
Number of Census Tracts	5
Source: U.S. Department of Agriculture, 2019	

Households With High Cost Burden (65+)	Value
Owner-Occupied Households	1,276
Percent of Owners with High Cost Burden	8%
Renter-Occupied Households	354
Percent of Renters with High Cost Burden	17%
Households with a high cost burden have occupants age 65+ paying more than 30% of income for housing costs and having an income below 50% of the area median income.	
Source: The Shimberg Center for Housing Studies, 2020	

Affordable Housing Inventory	Value
Properties	1
Properties Ready for Occupancy	1
Total Units	37
Units with Rent and/or Income Restrictions	37
Units Receiving Monthly Rental Assistance	0
Affordable housing inventory receives funding from HUD, Florida Housing Financing Corp., and the USDA. The inventory above includes older adults as its target population.	
Source: The Shimberg Center for Housing Studies, 2020	

Housing Units by Occupancy (65+)	Percent
Owner-Occupied Housing Units	39%
Renter-Occupied Housing Units	24%
Source: U.S. Census Bureau, 2015-2019 ACS	

Vehicle Access (65+)	Percent
Owner-Occupied Households with Access to Vehicle(s)	94%
Renter-Occupied Households with Access to Vehicle(s)	88%
Source: U.S. Census Bureau, 2015-2019 ACS	

Employment Status (65+)	Value	Percent
Number of Seniors Employed	1,080	17%
Number of Seniors Unemployed	0	0%
Source: U.S. Census Bureau, 2015-2019 ACS		

Retirement (65+)	Value	Percent
Social Security Beneficiaries	4,010	72%
SSI Recipients	150	20%
SSI stands for Supplemental Security Income. To qualify, a person must be at least age 65 OR be blind or disabled. Also, the person must have limited income and resources.		
Source: U.S. Social Security Administration, 2019		

SNAP or Food Stamps	Value
Potentially Eligible	833
Annual Participants	992
Current Beneficiaries as of Dec-20	798
Percent of Total Population Receiving Benefits	15%
Potentially Eligible are individuals below 125% of the Federal Poverty Level	
Source: Florida Department of Children and Families, 2020	

# 2021 Profile of Older Floridians

## Taylor County Health Profile and Medical Resources

The health and medical section presents the variety and availability of different types of facilities, medical professionals, and treatment services in the community. This includes complex estimates based on probable usage by older adults. For example, the "Medically Underserved" are areas designated by the U.S. Department of Health and Human Services as having too few primary care providers, high infant mortality, high poverty, or a high elderly population. Medical access and health support services information is an important area for community planners to ensure that support is in place to accommodate an older population.

Ambulatory Surgical Centers	Value
Facilities	0
Operating Rooms	0
Recovery Beds	0

Source: Florida AHCA, 2021

Hospitals	Value
<b>Hospitals</b>	1
Hospitals with Skilled Nursing Units	0
<b>Hospital Beds</b>	48
Skilled Nursing Unit Beds	0

Source: Florida AHCA, 2021

Medical Professionals	Value
<b>Medical Doctors</b>	
Licensed	7
Limited License	0
Critical Need Area License	0
Restricted	0
Medical Faculty Certification	0
Public Health Certificate	0
<b>Other Professionals</b>	
Licensed Podiatric Physicians	0
Licensed Osteopathic Physicians	3
Dentists	4
<b>Licensed Registered Nurses</b>	168
<b>Pharmacies</b>	9

Source: Florida Department of Health, 2021

Assisted Living Facility	Value
<b>Total ALF Beds</b>	0
Optional State Supplementation (OSS) Beds	0
Non-OSS Beds	0
<b>Total ALF Facilities</b>	0
Facilities with Extended Congregate Care License	0
Facilities with Limited Mental Health License	0
Facilities with Limited Nursing Service License	0

Source: Florida AHCA, 2021

Medically Underserved	Value	Percent
<b>Total Medically Underserved</b>	5,511	83%
Living in Areas Defined as Having Medically Underserved Populations	0	0%
Living in Medically Underserved Areas	5,511	83%

Source: Calculated using U.S. Health Resources & Services Administration and AGID

Health Insurance 65+	Value	Percent
Insured	4,114	63%
Uninsured	0	37%

Source: U.S. Census Bureau, 2015-2019 ACS

Disability Status	Value	Percent
With One Type of Disability	1,160	18%
With Two or More Disabilities	945	14%
<b>Total With Any Disability</b>		
Hearing	700	11%
Vision	545	8%
Cognitive	535	8%
Ambulatory	1,320	20%
Self-Care	540	8%
Independent Living	660	10%
With No Disabilities	3,390	51%
Probable Alzheimer's Cases (65+)	579	9%

Source: AGID 2014-18 ACS

Medicaid & Medicare Beneficiaries	Value	Percent
60+ Medicaid Eligible	917	15%
60+ Dual Eligible	797	71%

Source: Florida AHCA, 2021

Adult Day Care (ADC)	Value
ADC Facilities	0
Capacity	0

Source: Florida AHCA, 2021

Home Health Agencies	Value
<b>Agencies</b>	0
Medicaid Certified Agencies	0
Medicare Certified Agencies	0
Homemaker and Companion Service Companies	3

Source: Florida AHCA, 2021

# 2021 Profile of Older Floridians

## Taylor County Health Profile and Medical Resources

Skilled Nursing Facility (SNF) Use	Value
<b>SNFs With Beds</b>	1
Community Beds	1
Sheltered Beds	0
Veterans Administration Beds	0
Other Beds	0
<b>SNF Beds</b>	120
Community Beds	120
Sheltered Beds	0
Veterans Administration Beds	0
Other Beds	0
<b>SNFs With Community Beds</b>	1
Community Bed Days	43,920
Community Patient Days	39,186
Medicaid Patient Days	32,021
Occupancy Rate	89%
Percent Medicaid	82%

The day the patient is admitted is a patient day. A bed day is a day during which a person is confined to a bed and in which the patient stays overnight in a hospital.

Source: Florida AHCA, 2021

Emergency Medical Services (EMS)	Value
Providers	0

EMS providers include air ambulances and ambulances with Basic Life Support (BLS) or Advanced Life Support (ALS).

Source: Florida Department of Health, 2021

Adult Family Care Homes	Value
Homes	0
Beds	0

Source: Florida AHCA, 2021

Memory Disorder Clinics	Value
Total	0

Source: Florida DOEA's Summary of Programs and Services (SOPS), 2020

Dialysis	Value
End-Stage Renal Disease Centers	1

Source: Florida Department of Health, 2021

## Taylor County Disaster Preparedness

The disaster preparedness section presents the count and percentage of people age 60 or older living in the legislative district that fall within particular storm surge evacuation zones, as well as the number of DOEA Home and Community-Based Services (HCBS) clients who reside in these zones. The estimate of electricity-dependent individuals is presented by insurance type to show the number of people who use electricity-dependent medical equipment necessary for things such as survival or mobility. This information can also be used to evaluate the sufficiency of shelters, generators, and evacuation route roadways to handle the needs of seniors and medically fragile adults in emergencies.

Electricity-Dependent	Value
Medicare Beneficiary	316
Medicaid Beneficiary	291

Medicare beneficiary includes the entire Medicare population (65+ and SSI Recipients).

Medicaid beneficiaries are individuals age 60 to 64.

Source: Florida AHCA and U.S. Centers for Medicare & Medicaid Services, 2021

Shelter Resources	Value
<b>Number of General Shelters</b>	11
General Shelter Max Capacity in People	6,654
<b>Number of Special Needs Shelters</b>	0
Special Needs Shelters Max Capacity in People	0

Source: FDEM, 2021

Evacuation Zones	Value	Percent
<b>DOEA HCBS Clients Residing in Evac Zone:</b>	0	0%
Zone A	0	0%
Zone B	0	0%
Zone C	0	0%
Zone D	0	0%
Zone E	0	0%
<b>DOEA HCBS Clients</b>	148	
Lives in an Evac Zone and Has Memory Problems	1	1%
Lives in an Evac Zone and Lives Alone	7	5%

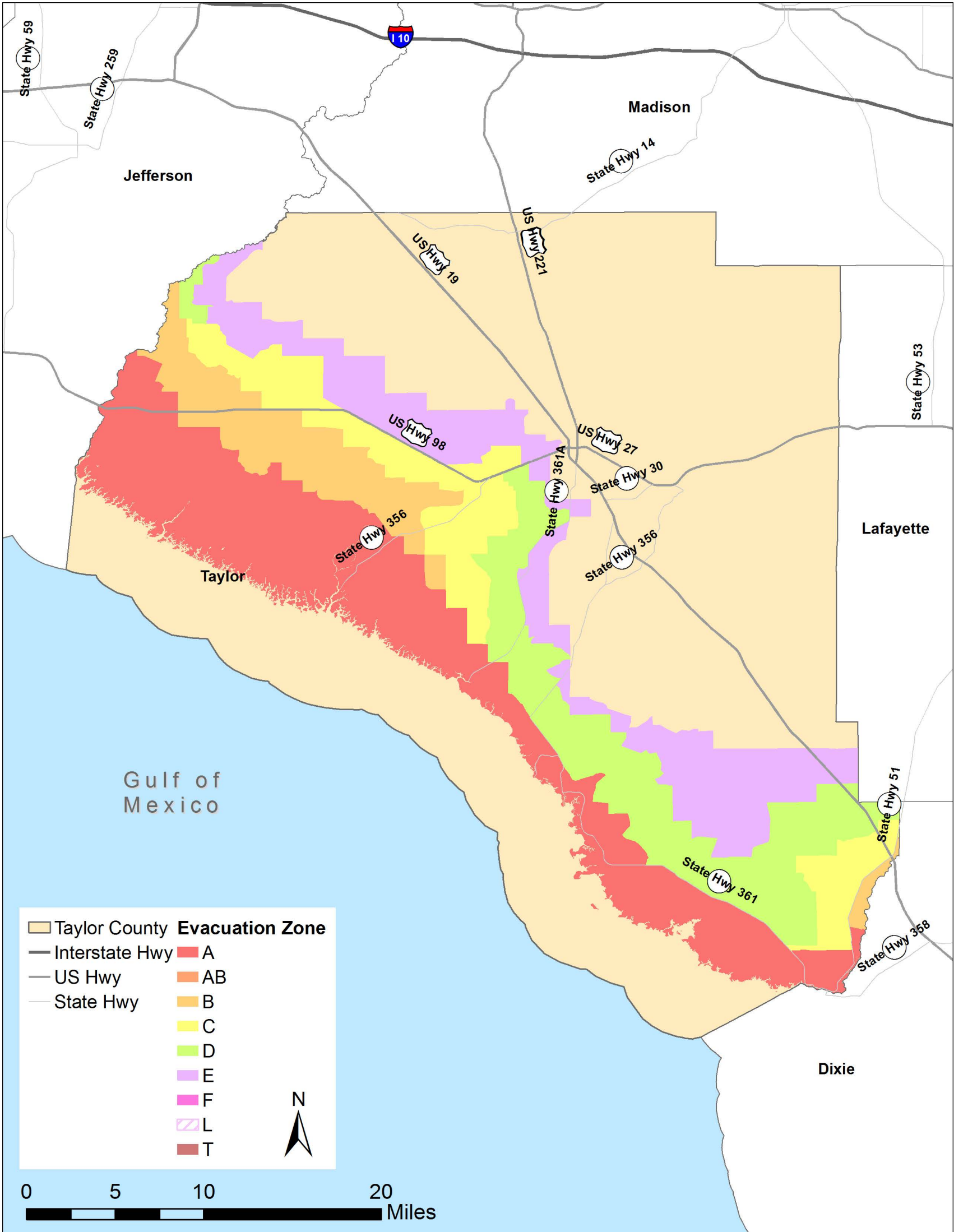
Zones are associated with the following surge heights: Zone A up to 11 feet, Zone B up to 15 feet, Zone C up to 20 feet, Zone D up to 28 feet, and Zone E up to 35 feet.

Source: Florida DOEA CIRT, Florida Division of Emergency Management (FDEM), 2021

2021 Profile of Older Floridians

Taylor County Disaster Preparedness

Evacuation Zones



Zones are associated with the following surge heights: Zone A up to 11 feet, Zone B up to 15 feet, Zone C up to 20 feet, Zone D up to 28 feet, and Zone E up to 35 feet.

Source: FDEM, 2021.